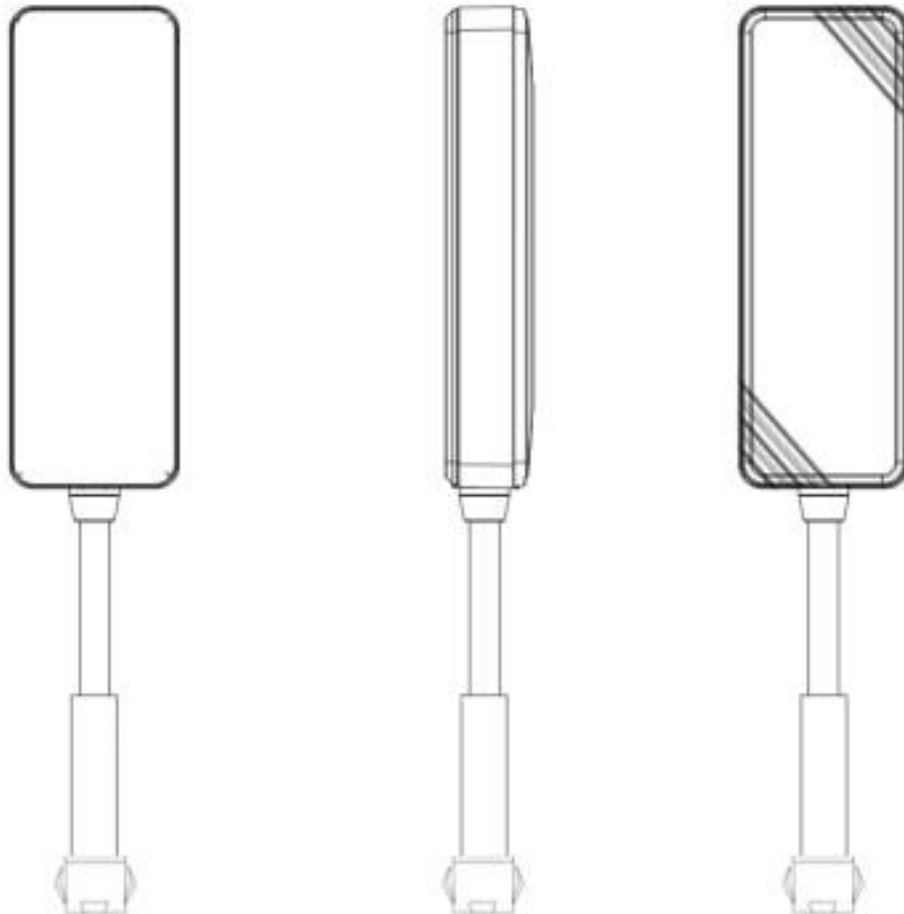


# QUICK TOUR

**Accurate Tracking | Power standby**



Please carefully read the user guide before use in order to quickly get the right to operate. Product appearance, color and accessories are subject to change without prior notice in this manual!

## ① Functions and Product parameters

- ◆ Real-time tracking    ◆ against pseudo base-station&detect
- ◆ Vibration/Displacement/Low battery/Power off/over speed alert
- ◆ Main power cut off alert    ◆ Geo-fence
- ◆ History Route    ◆ AGPS locating
- ◆ Anti-Detection    ◆ Anti Pseudo base station

Frequency	
	GSM    850/900/1800/1900MHz
Networks	GSM/GPRS
Backup Battery	3.7V 370mAh
Operating voltage	9-100V
Location time	Cold start 35s-80s
	Hot start 1s
Location accuracy	5 meters
Operating temperature	-20℃~+55℃
Dimension	74*25*13mm
Weight	30 g

Note: against pseudo base-station&detect function should under power save work mode! The device would wake up when move and speed above 20km/h.

## ② LED Indicator Definition

Green Indicator: GPRS

Status of indicator	Meaning
Flash	GSM/GPRS conversation start
Continuously in bright status	No GPRS signal
Green Led off	Power off or in sleep mode

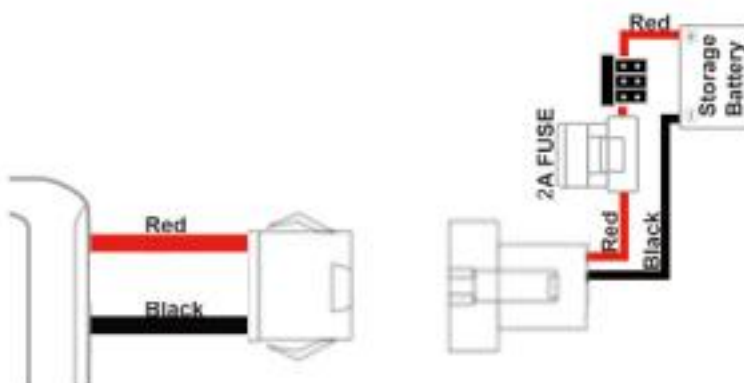
Blue Indicator: GPS

Status of indicator	Meaning
Flash	GPS location successful
Continuously in bright status	GPS signal searching
Blue led off	Power off or in sleep mode

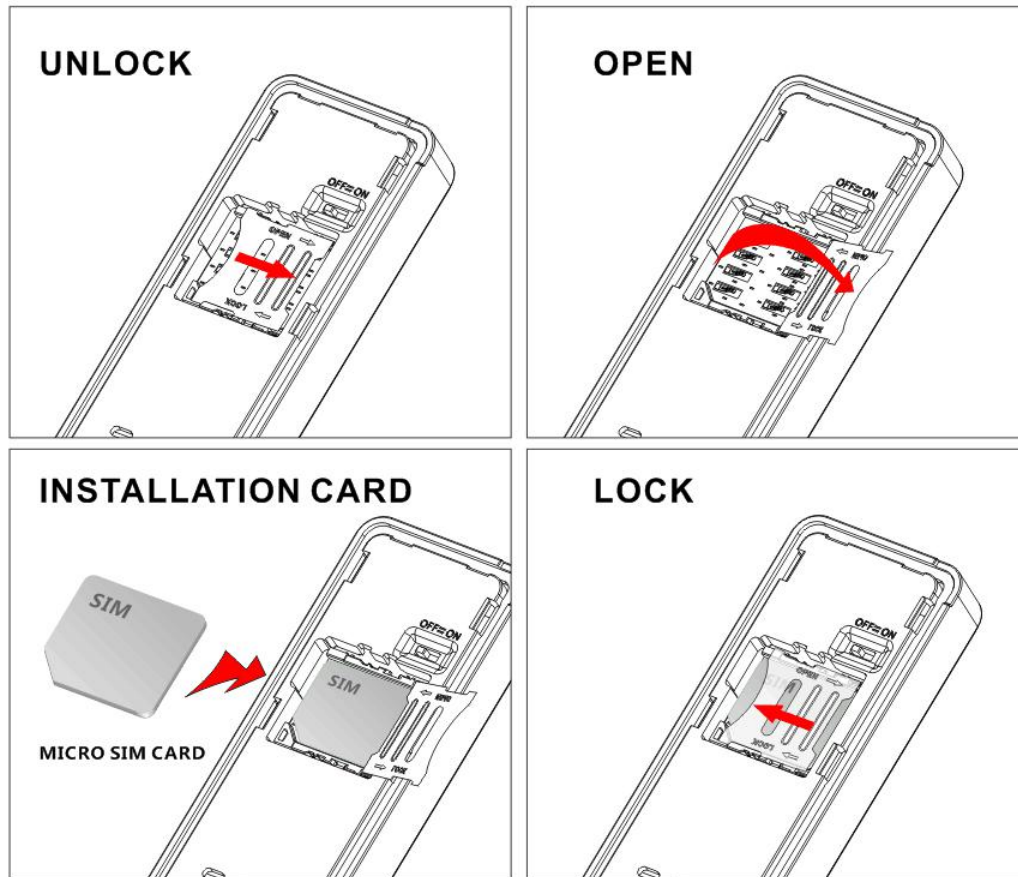
Red Indicator: Power charge

Status of indicator	Meaning
Continuously in bright status	charging
Red led off	Power off or charged full

NOTE: Please connect the cable follow below pictures.



### ③ Start up



a, Open the top, Insert a micro SIM card support GSM/GPRS network into the slot and make sure the chip side is down.

b, Connect power cable and turn on the power button to on.

c, Set admin number,by sending a SMS command to the SIM card inside device.

For example: admin123456 +86186\*\*\*\*\* (+86186\*\*\*\*\*should be your phone number)

d, Set APN: APN123456 CMNET (please use your local APN instead of CMNET,if you do not know the APN content,you should contact your SIM card supplier)

#### ④ More Commands

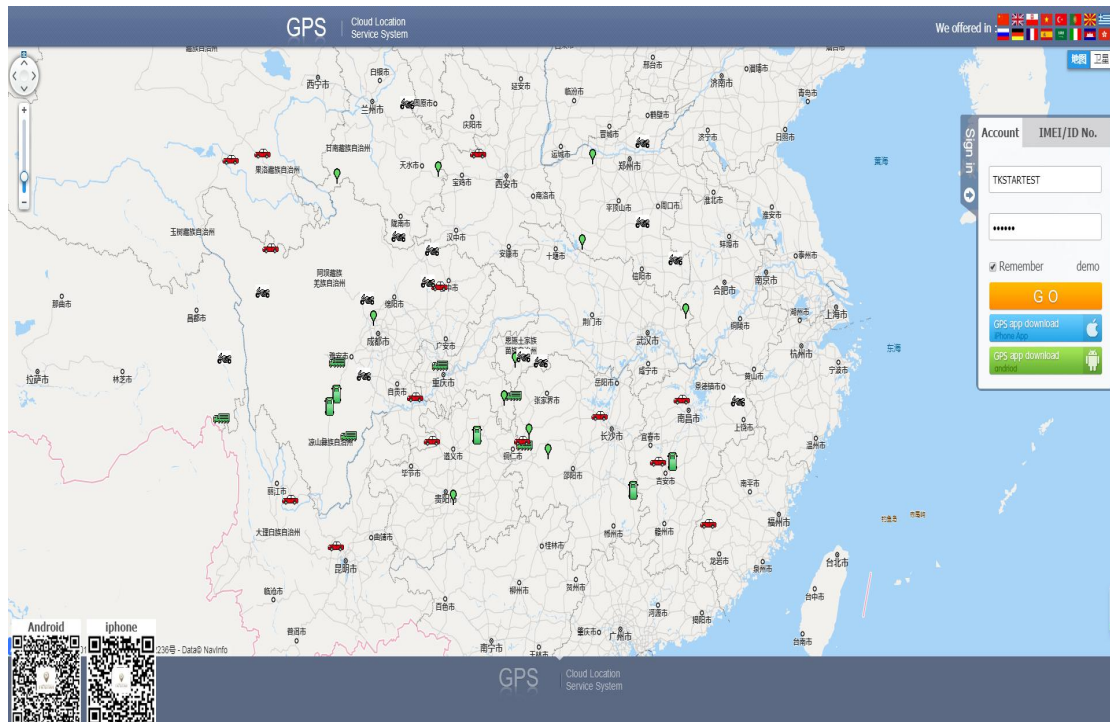
Function	Command Format	Reply	Delete	for example
APN	apn+123456+space+content	apn ok		apn123456 cmnet
	apnuser+123456+space+content	apnuser ok		
	apnpasswd+123456+space+content	apnpasswd ok		
admin number	admin123456+space+admin phone number	admin ok	noadmin 123456	admin123456 186*****
time zone	timezone+123456+space+GMT No.	timezone ok		timezone123456 +1
Power save(default)	sleep123456 time	sleep time ok		
shock sleep	sleep123456 shock	sleep shock ok		
no sleep	sleep123456 off	sleep off ok		
upload frequency	upload123456+space+time	upload ok		upload123456 10
Arm&Disarm	111 or SF	Arm delay in 0s	000 or CF	
Position	G123456# or where	Google map		
Restart	rst	restart ok		
Back to factory	format	No reply		

## 8.Login by Tracking Website and Phone APP

### Login by Website:

A,Open the website [gps.tk-star.com](http://gps.tk-star.com)

B,Login by username or the IMEI/ID, the default password “123456” and Click “GO”



### Login by Phone APP:



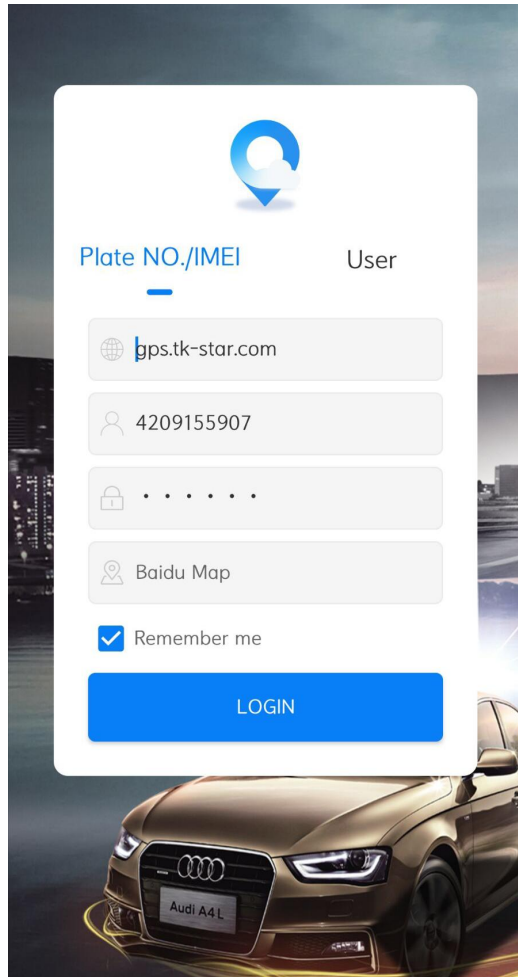
A,Download Phone APP:

Method 1: Scan above QR to download;

Method 2: search “**TKSTAR GO**” in the APP store or Google play store to download.

B,Insert the server [www.xetrace.com](http://www.xetrace.com)

C,Login by username or the IMEI/ID, the default password “123456”.



The image shows a login interface for a vehicle tracking system. At the top is a blue location pin icon with a white cloud. Below it are two tabs: "Plate NO./IMEI" (selected with a blue underline) and "User". There are four input fields: the first contains "gps.tk-star.com" with a globe icon; the second contains "4209155907" with a person icon; the third contains six dots with a lock icon; and the fourth contains "Baidu Map" with a location pin icon. Below the fields is a checked checkbox labeled "Remember me". At the bottom is a blue "LOGIN" button. The background features a gold Audi A4 L car at the bottom and a city skyline at night.

Plate NO./IMEI User

gps.tk-star.com

4209155907

.....

Baidu Map

☒ Remember me

LOGIN

Audi A4 L

## **⑤ Faults & The solutions**

**Q: Start up Fail?**

A: Check the cable connect right or not.

**Q: The device can not obtain location information?**

A: Place the unit at the open area to test.

**Q: How to choose SIM card?**

A: the SIM card must support GSM&GPRS, and ensure that the card has enough currency and credit.

**Q: How to use in the foreign countries?**

A: please set the APN before use, please edit the text "APN123456 CMNET " and send it to the SIM card of the device, CMNET is Chinese operator's APN, Replace the corresponding APN when use in other countries, APN details, please consult your local SIM card carrier.



## ⑥ Cautions

Please comply with the instructions to extend the unit life:

1. Keep the unit dry. Any liquid, i.e. rain, moisture, may destroy or damage the inside circuitry.
  2. Don't use & store the unit in dusty places.
  3. Don't put the unit in overheated or over cooled places.
  4. Handle carefully. Don't vibrate or shake it violently.
  5. Clear the unit with a piece of dry cloth. Don't clean in chemicals, detergent.
  6. Don't paint the unit, this may cause some foreign materials left in between the parts.
  7. Don't disassemble or refit the unit.
  8. Please use the battery and charger provided by manufacturer.
- Using other batteries and chargers will cause unwanted situation.